

~~CONFIDENTIAL~~

EXPLOITATION REPORT

FRAGMENT, METAL, RECOVERED IN THE REPUBLIC OF THE CONGO,
COUNTRY BELIEVED TO BE AN UNIDENTIFIED FLYING OBJECT
(COUNTRY UNIDENTIFIED) (U)
MXN-25500

SECTION I. (C) Purpose (U)

1. (C) The purpose of this report is to present the results of
the exploitation of a metallic fragment recovered near the town of
Kerekena in the Republic of the Congo. The recovery was the
result of a ground-level search which was conducted after an
unidentified flying object exploded and fell to earth in the area. The
sighting and recovery took place sometime between 10 and 15 October 1965.
Other than a reported east-to-west direction of flight for the UFO,
specific observation and recovery details are lacking.

SECTION II. (C) Description (U)

2. (C) Details concerning the exact location and characteristics
of impact are unknown. However, the appearance of the fragment in-
dicated exposure to high temperatures prior to impact (burnt). The
surface of the specimen had little or no effect on its final condition
or appearance. The fragment weighed 26.2 g, had an indefinite density
of approximately iron and measured 2.25 x 1.75 x 1.0 inches. The top
and side views of the specimen were rounded and appeared to have
been shaped by heating and melting. This is illustrated in Figures 1
and 2. The V-shaped groove, visible in Figure 1, is the outline of
an insert of steel that differs in composition from the rest of the
specimen. Figure 3 shows the side view of the specimen.

POOR ORIGINAL

GROUP 1
EXCLUDED FROM AUTOMATIC
DOWNGRADING AND
DECLASSIFICATION

REGRADED UNCLASSIFIED
ON 14 FEB 1992
BY GDR/USAN/SGM/EOT/PO
AUTH: Para 1-603 DOD 5200.1-R

~~CONFIDENTIAL~~

and was composed of six machined or formed shaped fins extending along the major axis of the fragment.

SECTION III. (C) Conclusions:

3. (C) The fragment was originally produced as an electrical component and could be identified as a motor stator, generator armature, or associated electrical regulator component or device.

4. (C) The fragment was constructed of .010-inch thick silicon steel laminate stacked on a central mild steel core or shaft.

5. (C) Materials, processes, dimensions, etc., as such, prevent determination of exact origin (country).

6. (C) Surface appearance and microstructure of the specimen indicates exposure to temperatures in excess of 2500° F.

SECTION IV. (C) Explosive Test (C)

7. (C) The recovered specimen was 41 grams and had a density closely approximating that of iron. A thin layer of metal or heavy oxide was visible on the surface. The specimen was exposed to temperatures in excess of 2500° F. While there are no indications of impact, the sliced metal, as shown in Figures 4 and 7, would substantiate the conclusion that the item was moving at a high velocity when it was shot.

8. (C) Fabrication of the item was accomplished utilizing more or less standard procedures for fabricating electric motor armatures.

Armature laminates were stamped (punched) from approximately .012-inch sheet steel, copper-steel, and assembled on a mild steel shaft.

approximately .433 inches in diameter. Following assembly, the

laminates were joined by solid-state or diffusion-bonding of the copper-

REGRADED UNCLASSIFIED
ON 10 FEB 1999
BY CDR USAIN/SCOM F01/HPO
AUTH: Para 1-808 DOD 5200.1R

~~CONFIDENTIAL~~

CONFIDENTIAL

placing. This can be accomplished by slightly compacting the laminate assembly and heating in a furnace. Temperature required for bonding of the copper depends upon the degree of compactness or pressure; the higher pressures requiring proportionately lower temperatures.

9. (C) A cross-section (transverse to the length of the specimen) is shown in Figure 5. The light-colored, jagged lines are the edges of individual laminates, caused by cutting at an angle to, instead of parallel to, the laminates. The fins or petals are "T" shaped. This shape is used to help the winding wire in place and is found on high RPM motors. The melted condition of some of the "T's" is indicative of the high heating conditions experienced. The outer surface of the armature shaft is serrated to prevent axial slippage of the laminates.

10. (C) The lamination or stacking of individual laminates is clearly illustrated in Figure 6. The space between laminates on the fin at the top of the photograph is due to the melting and charring of the copper during the high temperature exposure of the specimen. Some of the copper has been seen at the fin at the bottom of the photograph. A cross-sectional view of this area is shown in Figures 7 and 8.

11. (C) Another result of intense heating was the reduction in size of the steel laminates. The lamination shown in Figure 5 and 6 is approximately 1/8 inch thick and compares to Figure 2 of the report.

~~CONFIDENTIAL~~

intense heat and then cooled at a comparatively slow rate.

12. (C) The light material between the striations in Figure 9 is plated copper that melted and flowed between the laminations when the entire specimen was hot. A photomicrograph of this is shown in Figure 11.

13. (C) Analysis of the duct discloses the following:

<u>Element</u>	<u>Percent Present (Weight)</u>
Carbon	
Manganese	
Silicon	
Nickel	less than 0.10
Chromium	0.37
Molybdenum	less than 0.01

14. (C) Chemical composition of the steel laminations was as follows:

<u>Element</u>	<u>Percent Present (Weight)</u>
Manganese	0.25
Silicon	(0.3)
Nickel	less than 0.10
Chromium	
Molybdenum	less than 0.01

REGRADED UNCLASSIFIED
ON 10 FEB 1992
BY CDR USAINSCOM F01/PO
AUTH Para 1-603 DOD 5200.11R

~~CONFIDENTIAL~~

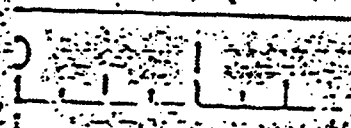


Figure 1. Top View of [unclear] 265-61

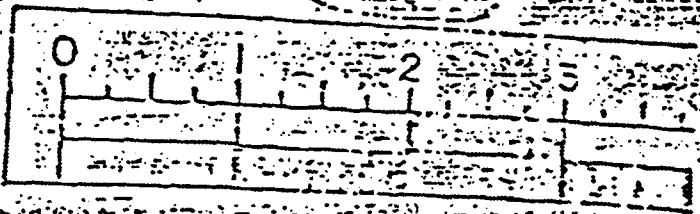


Figure 2. Side View of [unclear]

ORIGINAL

UNCLASSIFIED

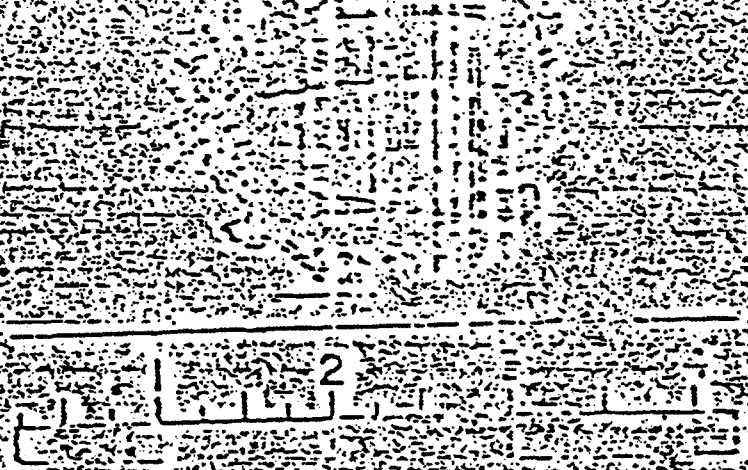
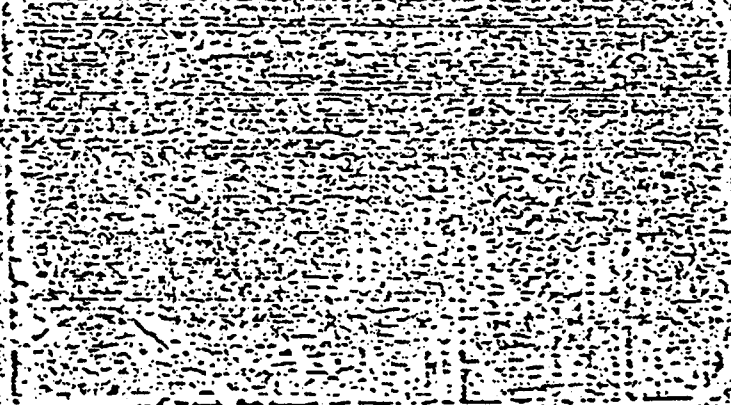


Figure 3 (Opposite View of Fig. 1 (A))

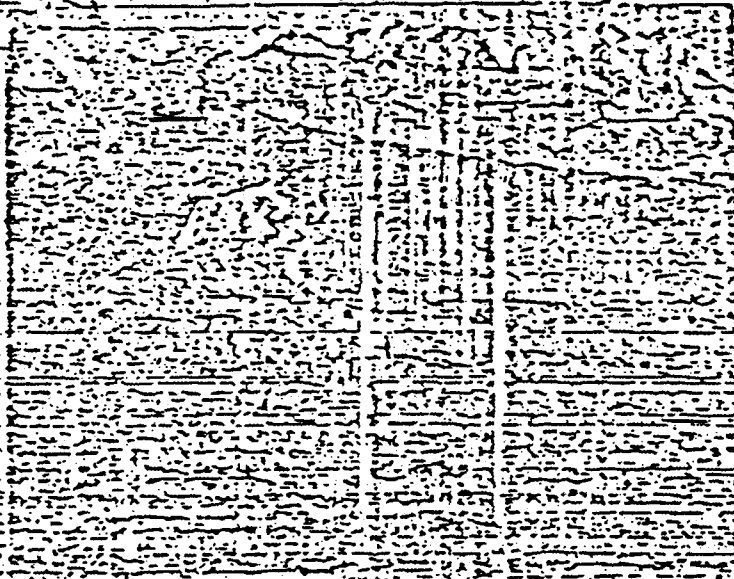


UNCLASSIFIED

UNCLASSIFIED



FIG. 1
SECTIONAL VIEW OF VALVE
(SEE FIG. 2 FOR DETAILS)



FOR ORIGINAL

UNCLASSIFIED



Figure 7. Micrograph Cross-Section of
Laser-Irradiated Area
Exp 11/2/80 157 (U)

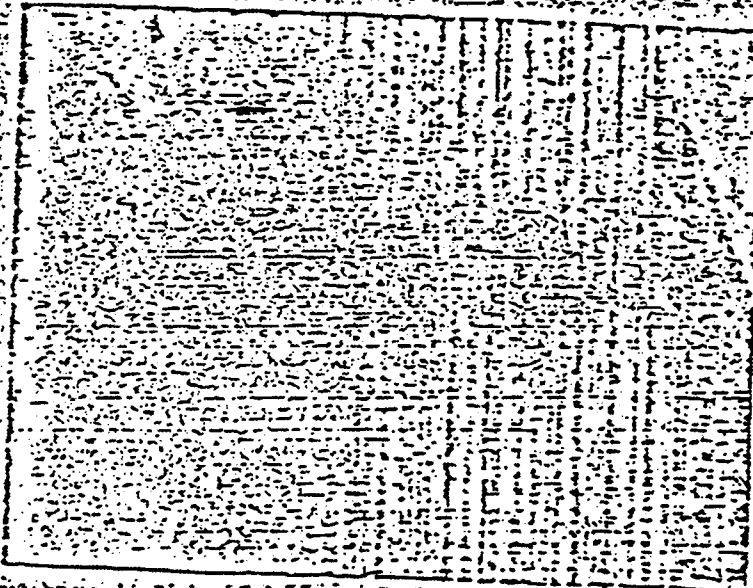


Figure 8. Micrograph Cross-Section of
Laser-Irradiated Area
Exp 11/2/80 158 (U)

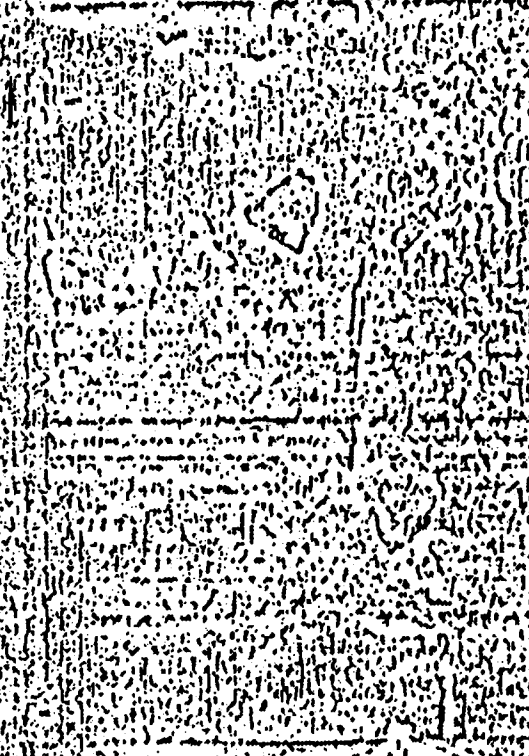
UNCLASSIFIED

UNCLASSIFIED

Figure 9 (Micrograph)
Magnification 63
(See Note on Page 1)

FOR ORIGINAL

U.S. GOVERNMENT PRINTING OFFICE



U.S. GOVERNMENT PRINTING OFFICE
WASHINGTON, D.C. 20540
1967 O - 348-000

ORIGINAL